

County Road 1513
Southern Line County Road 1513

ACQUIRED
BY BK 2956 Pg 98
DATE AUG 6, 1920
PLOTTED 6-23-78 WAM
CITY CLERK FILE NO. 71
parcel #1

ACQUIRED
BY LIBER 2861 Pg 434
DATE DEC 6, 1932
PLOTTED 6-23-78 WAM
CITY CLERK FILE NO. 135

ACQUIRED
BY BK 2042 Pg 370
DATE Mar 1, 1929
PLOTTED 6-23-78 WAM
CITY CLERK FILE NO. 101
SEE ALSO DWG 65 CASE 1303

Eastern boundary of 17 acre tract of land from Lizzie McCarty to A.S. Weaver BK 2788 Pg 284

ACQUIRED
BY BK 2956 Pg 98
DATE AUG 6, 1920
PLOTTED 6-23-78 WAM
CITY CLERK FILE NO. 71
parcel #2

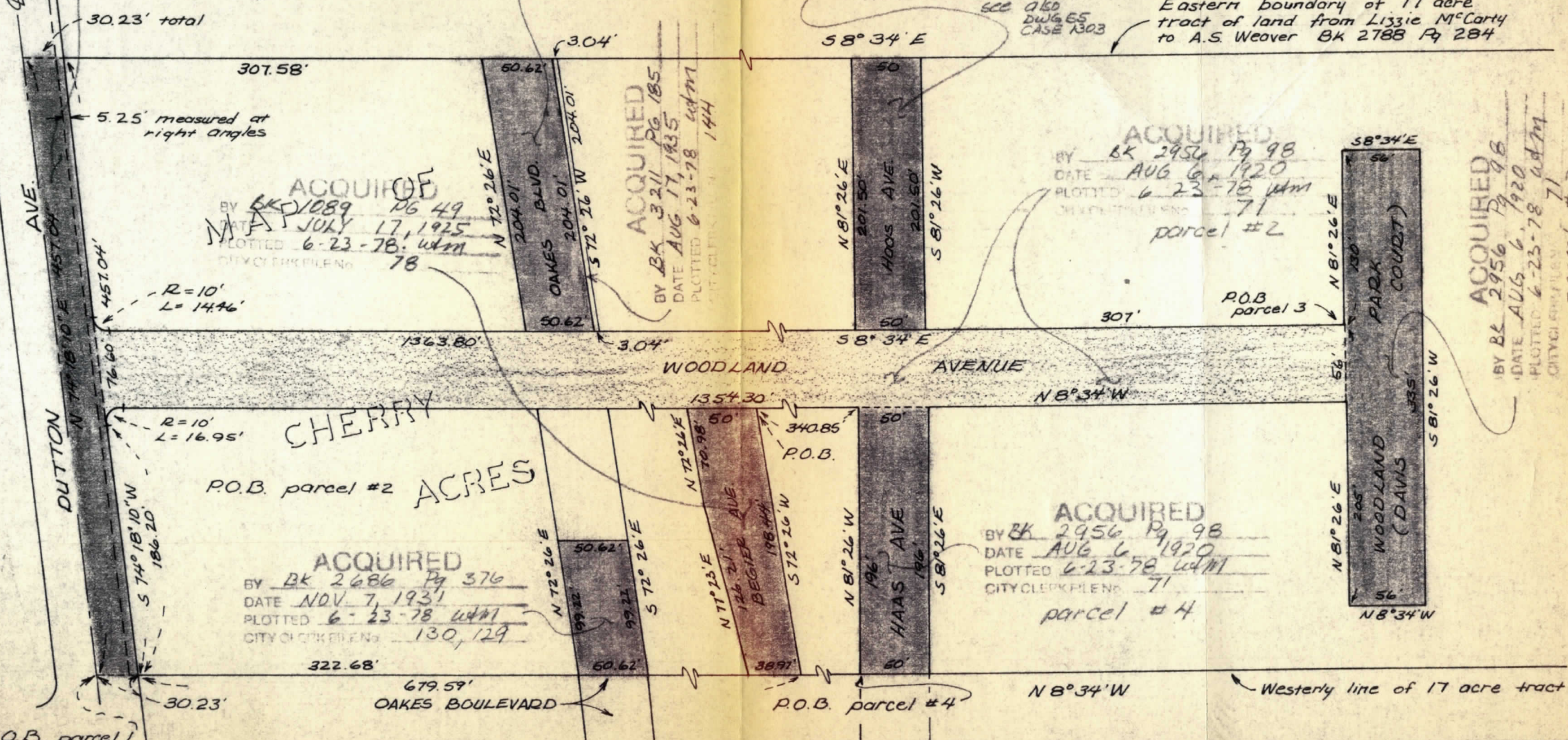
ACQUIRED
BY BK 2956 Pg 98
DATE AUG 6, 1920
PLOTTED 6-23-78 WAM
CITY CLERK FILE NO. 71
parcel #3

ACQUIRED
BY BK 1089 Pg 49
DATE JULY 17, 1925
PLOTTED 6-23-78 WAM
CITY CLERK FILE NO. 78

ACQUIRED
BY BK 3211 Pg 185
DATE AUG 17, 1935
PLOTTED 6-23-78 WAM
CITY CLERK FILE NO. 144

ACQUIRED
BY BK 2956 Pg 98
DATE AUG 6, 1920
PLOTTED 6-23-78 WAM
CITY CLERK FILE NO. 71
parcel #4

ACQUIRED
BY BK 2686 Pg 376
DATE NOV 7, 1931
PLOTTED 6-23-78 WAM
CITY CLERK FILE NO. 130, 129



PUBLIC WORKS DEPARTMENT — CITY OF SAN LEANDRO

NO.	DATE	REVISION	DESIGNER	APPROVAL DATE	DEEDS FOR CHERRY ACRES BATTY, JANSEN, FAUSTINA	SHEET _____ OF _____
			DRAFTSMAN <i>W. MONEZ</i>	RICHARD H. WARD Public Works Director R.C.E. No. 8375		JOB NO. _____ SCALE 1" = 80' DWG 626 CASE 1603

IT SHALL BE THE CONTRACTOR'S RESPONSIBILITY TO DETERMINE THE EXISTENCE AND LOCATION OF ALL UNDERGROUND UTILITIES. THOSE SHOWN REPRESENT THE BEST INFORMATION AVAILABLE TO THE CITY OF SAN LEANDRO AT THE TIME OF PREPARATION OF THESE PLANS. NO GUARANTEE IS MADE AS TO THE ACCURACY OF THIS INFORMATION.